



# Workshop on the EU Rail Facility Portal

Brussels

Julia Lamb, ERFA Secretary General





# OUR MEMBERS



Leasing companies



National rail associations



Intermodal operators

Freight Railway undertakings



Wagon keepers



Freight forwarders



# We want an attractive business environment for rail freight companies

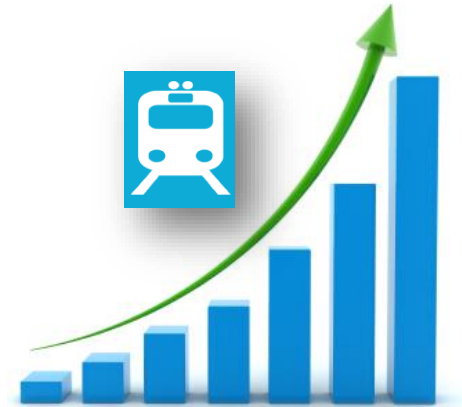


Rail is the **greenest** mode of transport and the only one which could help to meet the EU **White Paper's** targets

GETTING MORE GOODS OFF ROAD AND ONTO RAIL



The rail facilities market must support a competitive rail sector



# What can be the added value of the portal?

Accessibility of the information is crucial to making the rail freight market more attractive

➤ ONE place in ONE standardised format

Brings us one step towards the ideal situation whereby **facilities are competing with each other to attract customers, competing over quality and price. So that Rus have real choice!**

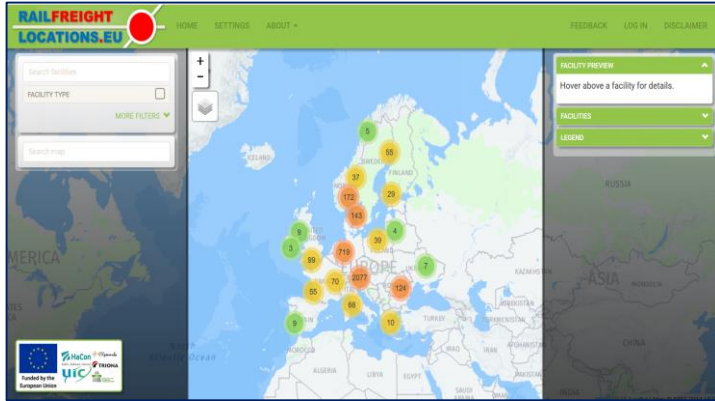


➤ Real-time information

TCRs

Capacity indication

# RU PRIORITIES



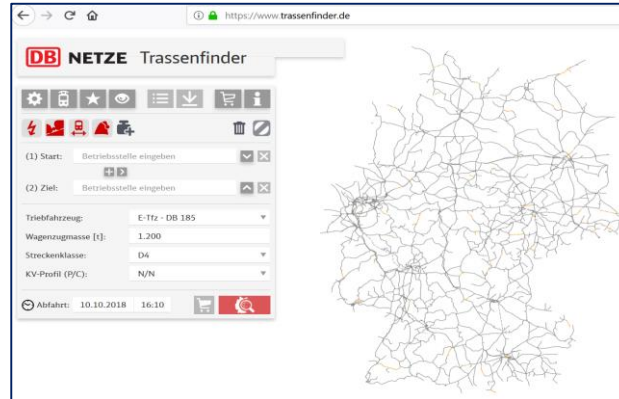
ACCURACY

USER-FRIENDLINESS

UP TO DATE

RELIABILITY

SIMPLICITY



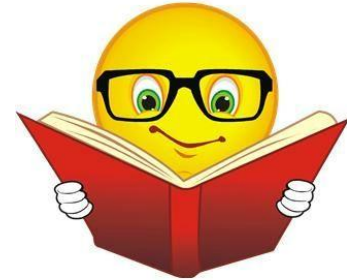
# OUR RECOMMENDATIONS



➤ In the 1st stage focus on key information: contact details, location and technical characteristics

➤ **KEEP COSTS LOW**

➤ We point to **RSRD2 portal as a potential model** for how the portal could be structured.



- Non-profit organisation
- Access is free of charge
- Wagon keepers pay 1.50 € per wagon per year
- RSRD2 allows data via web portal or via system interface

## **BENEFITS:**

Share costs, economies of scales, common standard, central data access, central collection of mileage data.

**WE SUPPORT THE DEVELOPMENT OF THE COMMON PORTAL AS A LOGICAL NEXT STEP TO MAKING THE INFORMATION REGARDING FACILITIES MORE VISIBLE!**



**WE ARE HOME TO NEW ENTRANTS OF INDEPENDENT  
COMPANIES OPERATING ACROSS THE WHOLE  
VALUE CHAIN OF THE RAIL FREIGHT SECTOR.**

**THANK YOU**

**[Julia.lamb@erfarail.eu](mailto:Julia.lamb@erfarail.eu)**

**[Silvia.de.rocchi@erfarail.eu](mailto:Silvia.de.rocchi@erfarail.eu)**